

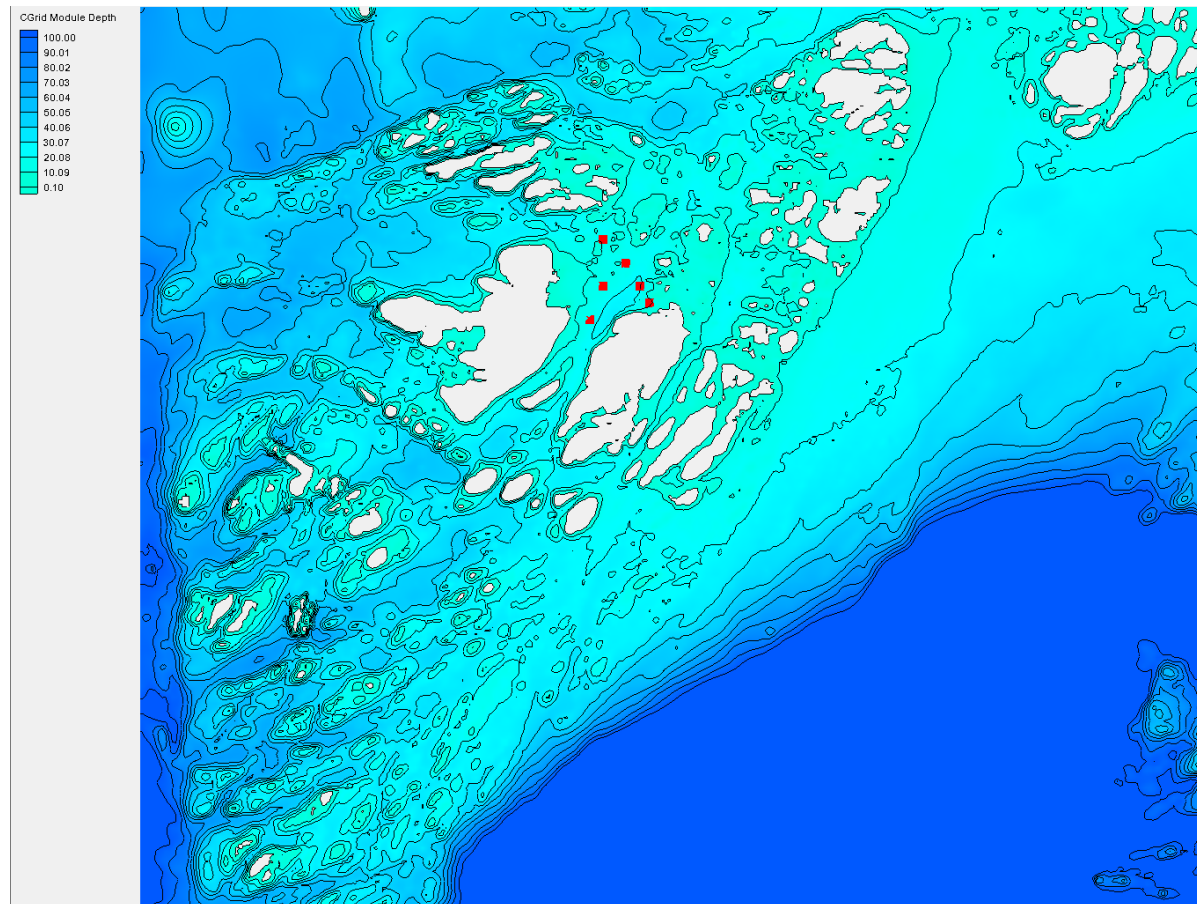
Norconsult 

Bølgeanalyse Træna Nordhusøy

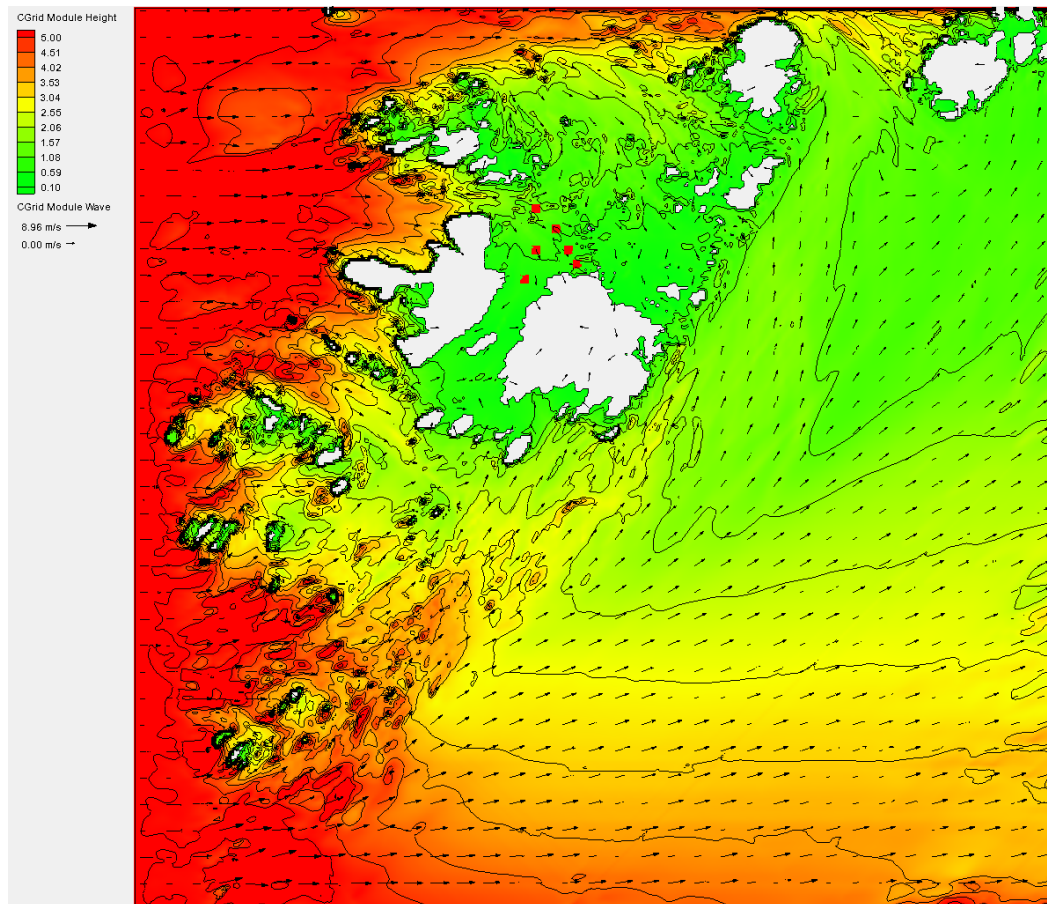
Statusmøte 01.10.2021



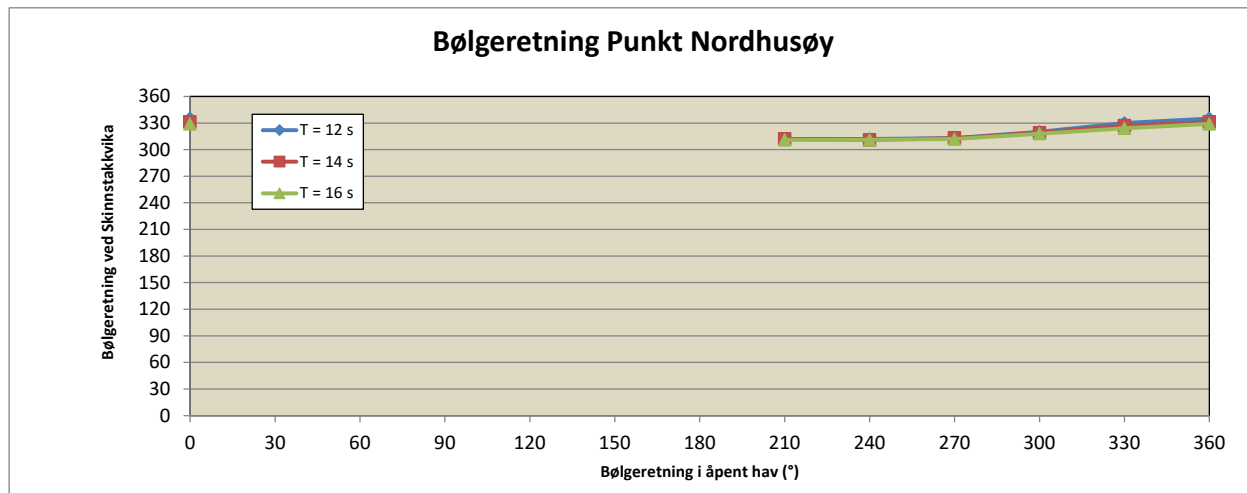
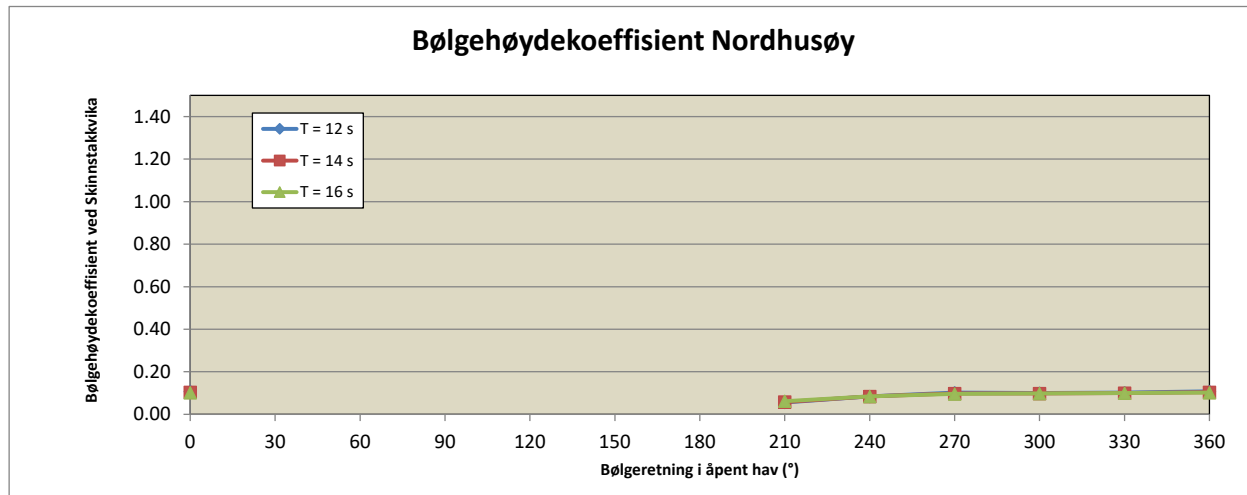
Dybdemodell



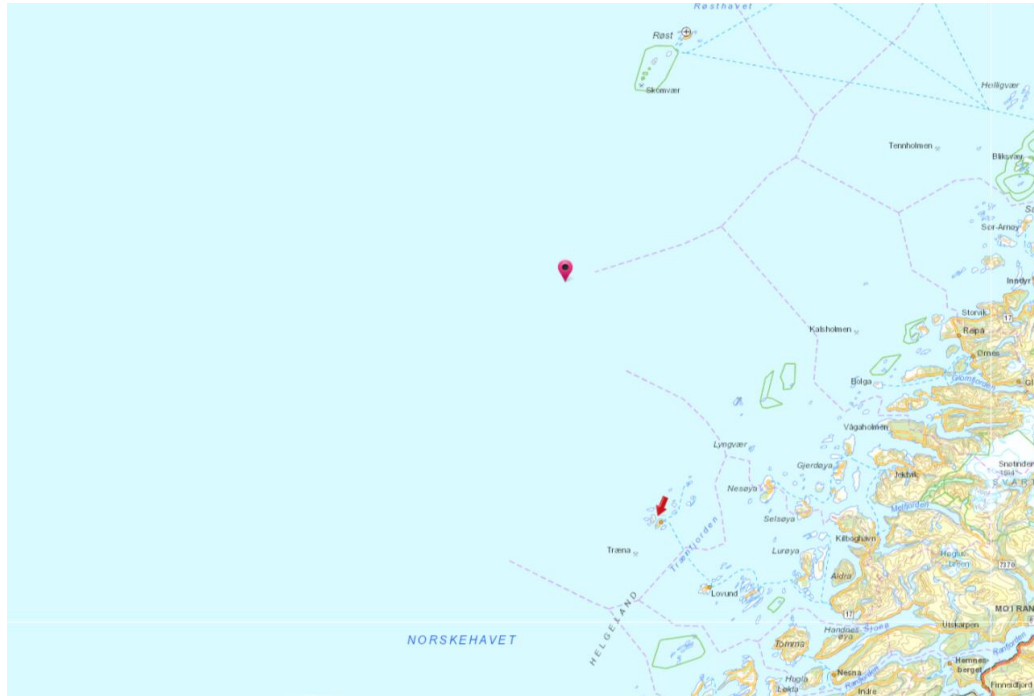
$$H_{s,inn} = 5.0 \text{ m}, T_p = 16 \text{ s, retning } 270^\circ$$



Resultat - koeffisienter



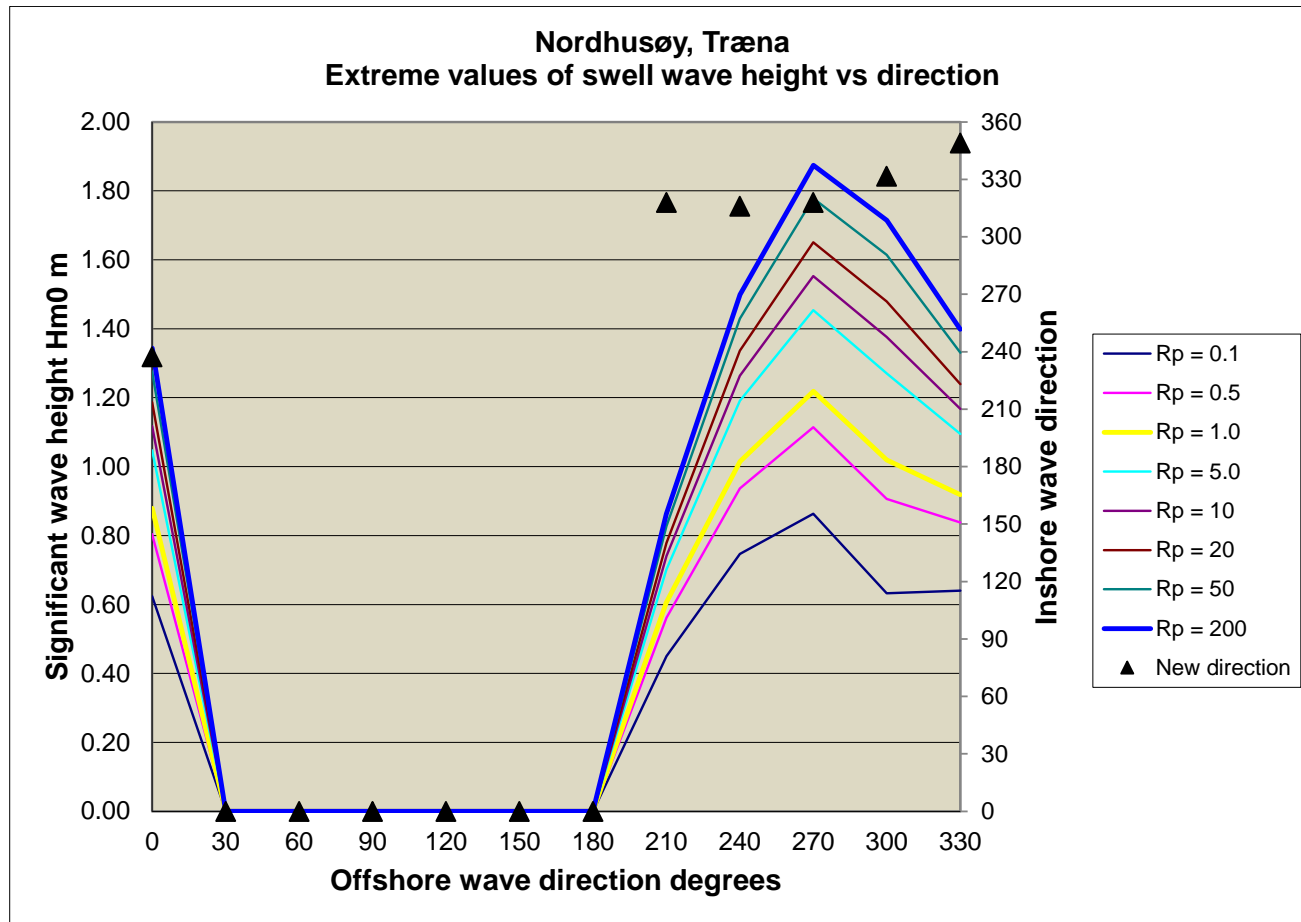
Hindcastpunkt 66.99, 11.52 (1957 – 2014)



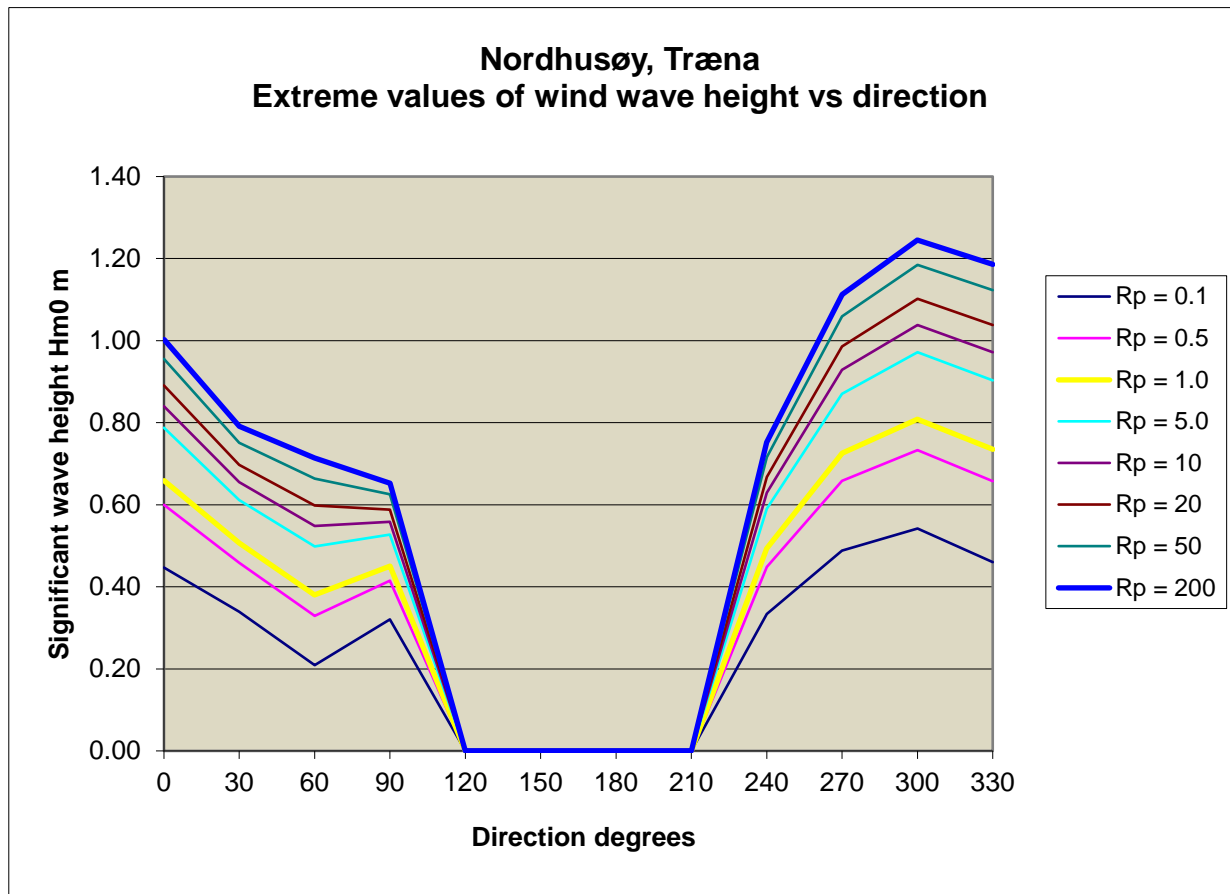
200 års signifikant bølgehøyde (m) i hindcastpunkt

0°	30°	60°	90°	120°	150°	180°	210°	240°	270°	300°	360°
10,5	6,4	4,2	2,7	4,8	5,0	7,9	12,8	16,3	17,0	15,7	12,0

Resultat – signifikant bølgehøyde og retning fra bølger fra åpent hav

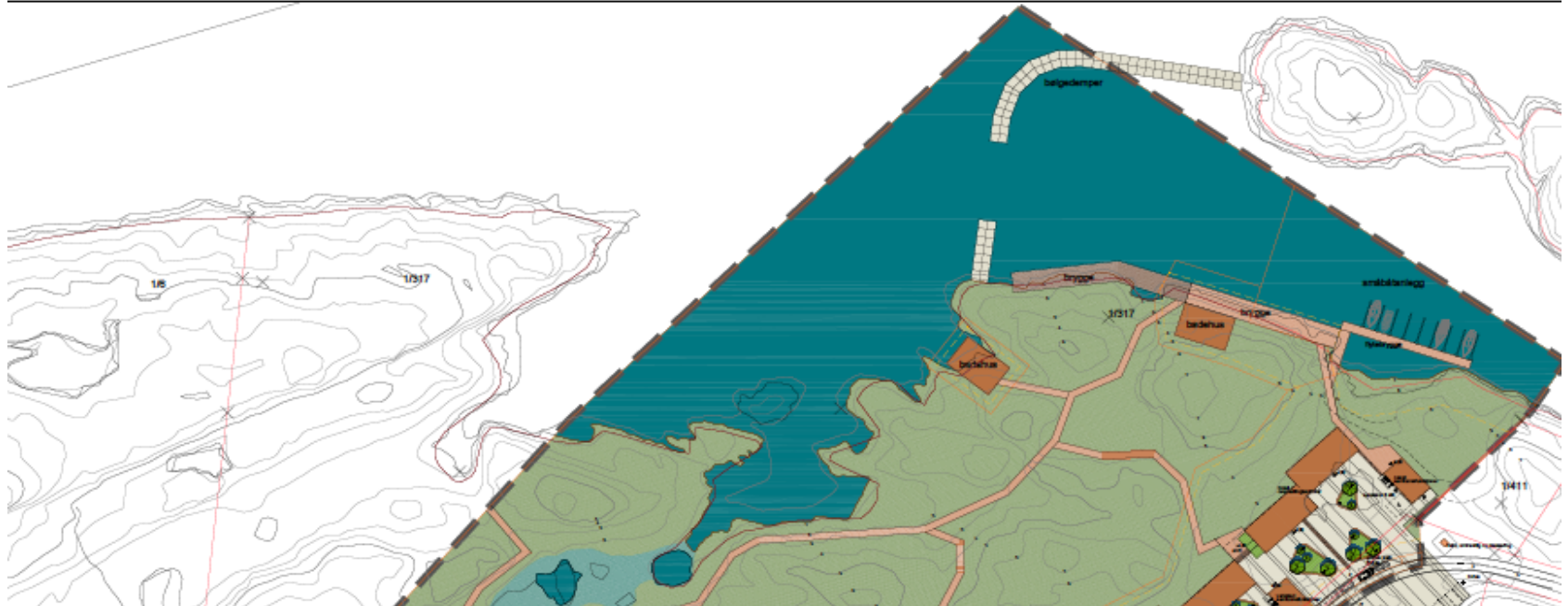


Vindbølger



Gir en samlet dim. 200 års $H_s = 2,4$ m

Layout til diskusjon



25 m lang båt = 82 fot.

Innseilingskanal minimum $9 \times$ båt bredde (B) toveis båttrafikk. 4,5 B for enveis.

Trenger manøvreringsareal inne i marina på minimum 37,5 m og helst 44 m (thruster)

Norconsult 